

BARRINGTON 20

DESIGNED TO SUIT: **12.50m x 25.00m**

REAR SETBACK: 3.00m

MINIMUM LOT WIDTH: **12.5m**

HOUSE
EXTERIOR LENGTH

18.60m

HOUSE
EXTERIOR WIDTH

11.30m

HOUSE
AREA TOTAL

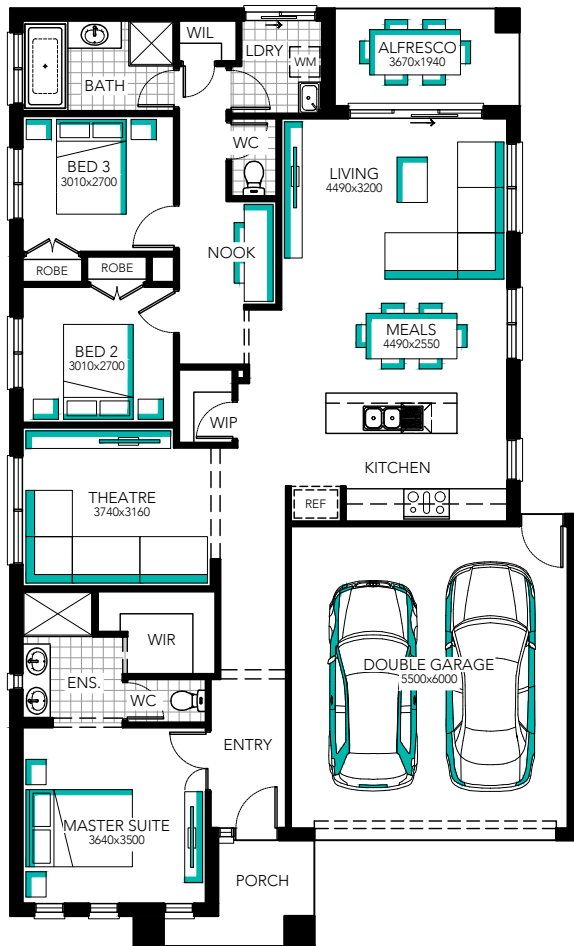
185.61m²

HOUSE
TOTAL SQUARES

19.98



Minimum lot sizes & dimensions may vary subject to fall of land, easement details, council & developer requirements. House size and dimensions on brochure based on Cashmere facade. Sizes and dimensions may vary subject to facade selection. Refer to working drawings for complete dimensions.



BARRINGTON 20

DESIGNED TO SUIT: **12.50m x 25.00m**

REAR SETBACK: 3.00m

MINIMUM LOT WIDTH: **12.5m**

HOUSE EXTERIOR LENGTH

18.60m

HOUSE EXTERIOR WIDTH

11.30m

HOUSE AREA TOTAL

185.61m²

HOUSE TOTAL SQUARES

19.98



Minimum lot sizes & dimensions may vary subject to fall of land, easement details, council & developer requirements. House size and dimensions on brochure based on Cashmere facade. Sizes and dimensions may vary subject to facade selection. Refer to working drawings for complete dimensions.