

## ROSEMONT 26 MK2

DESIGNED TO SUIT: **16.00<sub>m</sub> X 28.00<sub>m</sub>**

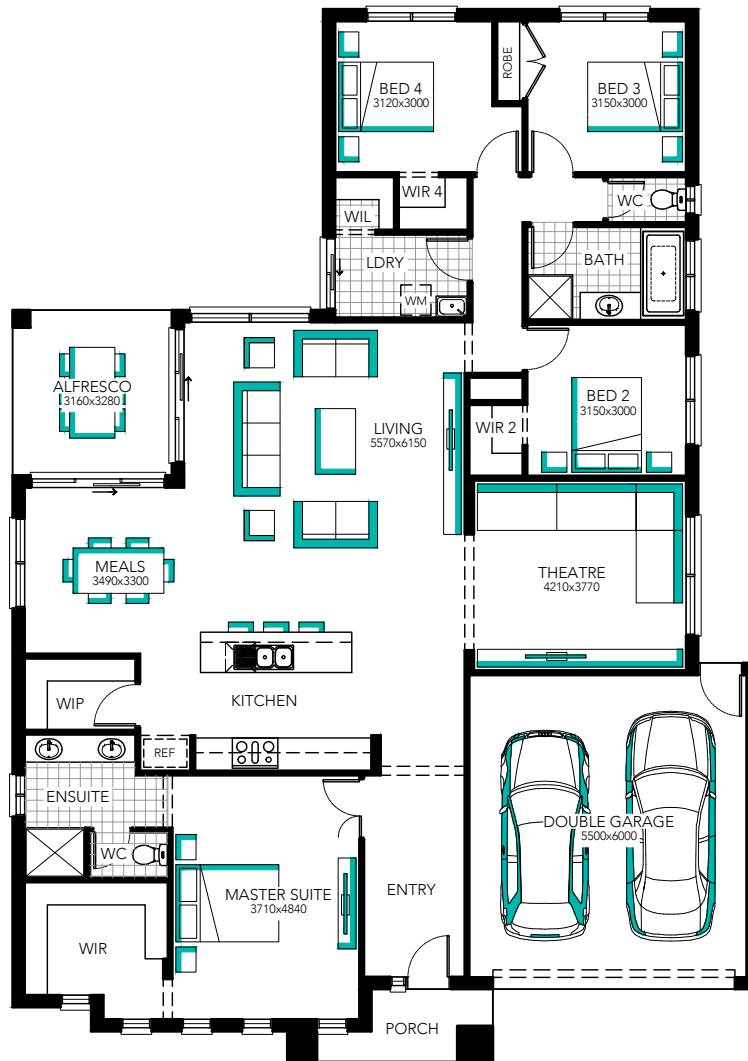
REAR SETBACK: 3.06m

MINIMUM LOT WIDTH: **16.0<sub>m</sub>**

HOUSE EXTERIOR LENGTH	HOUSE EXTERIOR WIDTH
<b>20.88<sub>m</sub></b>	<b>14.80<sub>m</sub></b>
HOUSE AREA TOTAL	HOUSE TOTAL SQUARES
<b>245.08<sub>m</sub><sup>2</sup></b>	<b>26.38</b>



Minimum lot sizes & dimensions may vary subject to fall of land, easement details, council & developer requirements. House size and dimensions on brochure based on Cashmere facade. Sizes and dimensions may vary subject to facade selection. Refer to working drawings for complete dimensions.



## ROSEMONT 26 MK2

DESIGNED TO SUIT: **16.00<sub>m</sub> X 28.00<sub>m</sub>**

REAR SETBACK: 3.06m

MINIMUM LOT WIDTH: **16.0<sub>m</sub>**

HOUSE  
EXTERIOR LENGTH

**20.88<sub>m</sub>**

HOUSE  
EXTERIOR WIDTH

**14.80<sub>m</sub>**

HOUSE  
AREA TOTAL

**245.08<sub>m</sub><sup>2</sup>**

HOUSE  
TOTAL SQUARES

**26.38**



Minimum lot sizes & dimensions may vary subject to fall of land, easement details, council & developer requirements. House size and dimensions on brochure based on Cashmere facade. Sizes and dimensions may vary subject to facade selection. Refer to working drawings for complete dimensions.