

ROSEMONT 26 MK2

DESIGNED TO SUIT: **16.00_m X 28.00_m**

REAR SETBACK: 3.06m

MINIMUM LOT WIDTH: **16.0_m**

HOUSE
EXTERIOR LENGTH

20.88_m

HOUSE
EXTERIOR WIDTH

14.80_m

HOUSE
AREA TOTAL

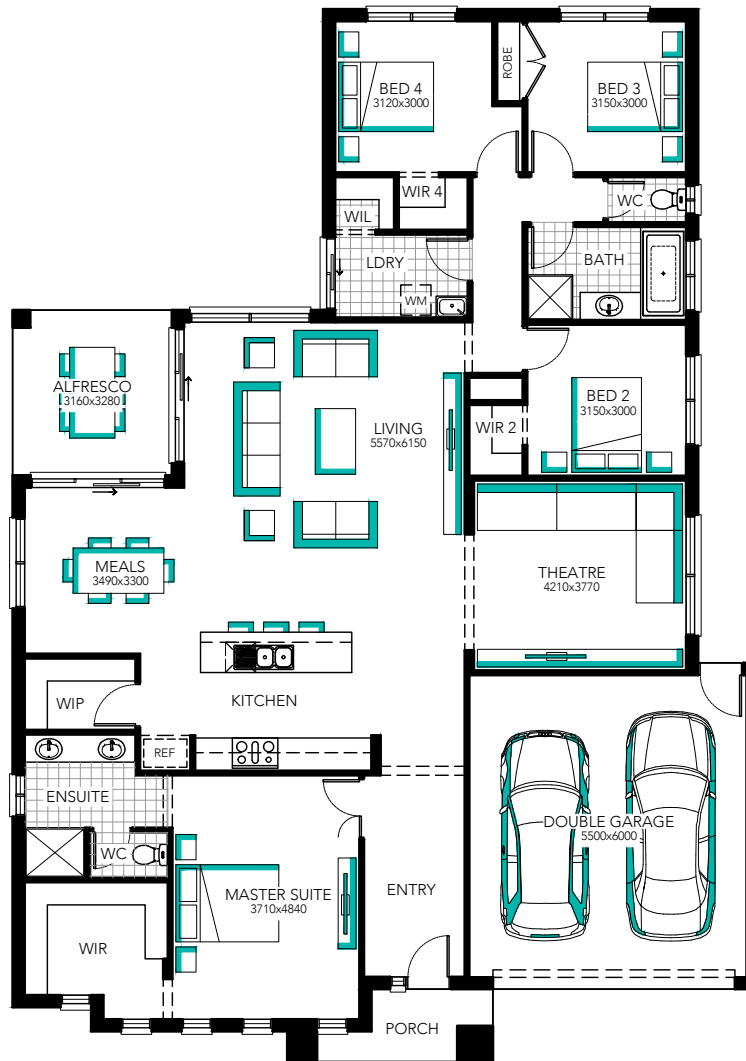
245.08_m²

HOUSE
TOTAL SQUARES

26.38



Minimum lot sizes & dimensions may vary subject to fall of land, easement details, council & developer requirements. House size and dimensions on brochure based on Cashmere facade. Sizes and dimensions may vary subject to facade selection. Refer to working drawings for complete dimensions.



ROSEMONT 26 MK2

DESIGNED TO SUIT: **16.00_m X 28.00_m**

REAR SETBACK: 3.06m

MINIMUM LOT WIDTH: **16.0_m**

HOUSE
EXTERIOR LENGTH

20.88_m

HOUSE
EXTERIOR WIDTH

14.80_m

HOUSE
AREA TOTAL

245.08_m²

HOUSE
TOTAL SQUARES

26.38



Minimum lot sizes & dimensions may vary subject to fall of land, easement details, council & developer requirements. House size and dimensions on brochure based on Cashmere facade. Sizes and dimensions may vary subject to facade selection. Refer to working drawings for complete dimensions.